

DOMES	# 71208	# 71210	# 71212	# 71214
DIAMETER	96" / 2439	120" / 3048	144" / 3658	168" / 4268
INSIDE HEIGHT	13 1/2" / 343	14 3/4" / 375	16" / 406	17 1/4" / 438

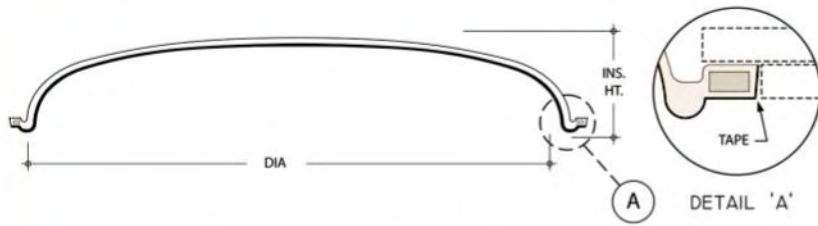
LIGHT COVER 'B' OPTION

DOMES	# 71308	# 71310	# 71312	# 71314
DIAMETER	96" / 2439	120" / 3048	144" / 3658	168" / 4268



Our selection of standard plain, fluted and coffered domes are all dimensioned to the finish face. Additional allowance must be made within the framing cutout for dome thickness, which varies depending on style and size.

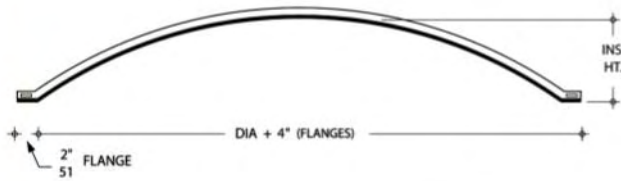
Custom shapes and designs, including light coves and decorative trim, can be supplied if required.



DOME ONLY

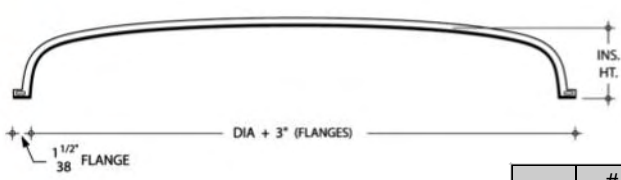
	# 70236	# 70248	# 70272
DIA.	35 3/4" / 909	47 3/4" / 1213	71 3/4" / 1823
HT.	7 1/8" / 181	8" / 204	9 5/8" / 245

DIA. = Diameter HT. = Inside Height



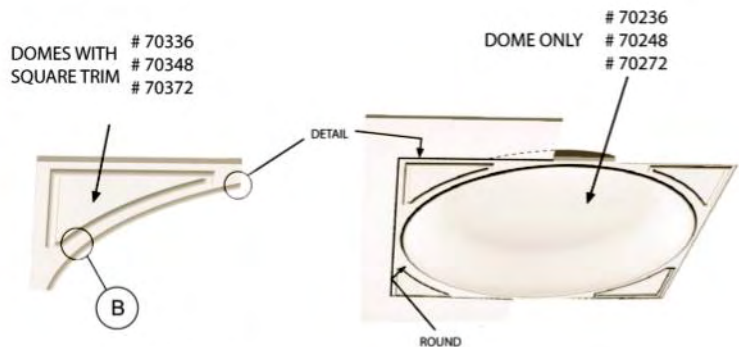
	# 94530	# 94531	# 94532	#94533
DIA.	42" / 1067	48" / 1220	60" / 1525	72" / 1829
HT.	6 3/4" / 172	10 13/16" / 275	11" / 280	17 1/16" / 434

DIA. = Diameter HT. = Inside Height



	# 94520	# 94521	# 94522	# 94523	# 94524
DIA.	48" / 1220	60" / 1524	72" / 1829	90" / 2286	96" / 2439
HT.	8" / 204	10" / 254	11" / 280	12" / 305	14" / 356

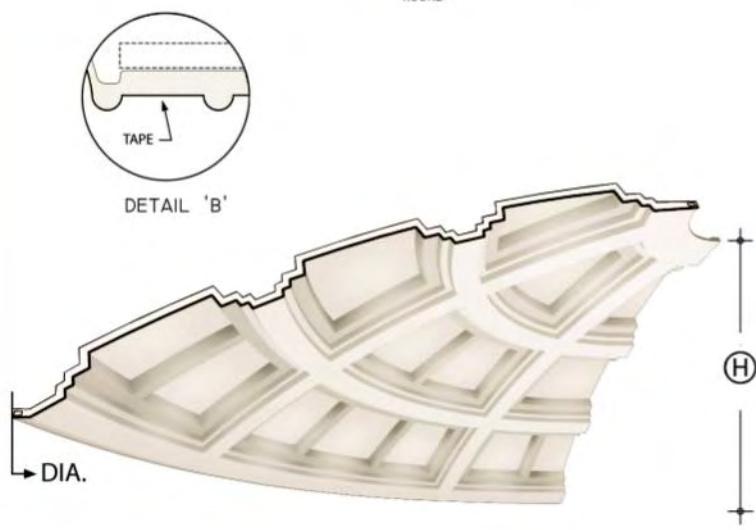
DIA. = Diameter HT. = Inside Height



DOME WITH SQUARE TRIM OPTION

	# 70336	# 70348	# 70372
DIA.	35 3/4" / 909	47 3/4" / 1213	71 3/4" / 1823
HT.	7 1/8" / 181	8" / 204	9 5/8" / 245

DIA. = Diameter HT. = Inside Height



COFFER DOMES

	# 71008	# 71011
DIA.	8'-0" / 2438	11'-0" / 3353
HT.	15" / 381	20" / 508

DIA. = Diameter HT. = Inside Height